

	This Class	Comparison Group		
	#	%	#	%
1. Requirement or elective status				
In students' major field of study	19	79.2%	798	94.3%
University requirement for degree program	5	20.8%	44	5.2%
An elective (whether or not in major)	0	0.0%	4	0.5%
	<u>24</u>	<u>100.0%</u>	<u>846</u>	<u>100.0%</u>
2. Did students' academic background prepare them				
Yes	20	80.0%	698	89.0%
No	5	20.0%	86	11.0%
	<u>25</u>	<u>100.0%</u>	<u>784</u>	<u>100.0%</u>
3. Classification of student				
Freshman	0	0.0%	0	0.0%
Sophomore	0	0.0%	2	0.2%
Junior	18	72.0%	452	53.5%
Senior	7	28.0%	389	46.0%
Graduate student	0	0.0%	0	0.0%
Other	0	0.0%	2	0.2%
	<u>25</u>	<u>100.0%</u>	<u>845</u>	<u>100.0%</u>
4. Approximate number of absences from this class				
Less than 3	24	96.0%	640	75.8%
3-5	1	4.0%	170	20.1%
6-9	0	0.0%	30	3.6%
9-11	0	0.0%	4	0.5%
12 or more	0	0.0%	0	0.0%
	<u>25</u>	<u>100.0%</u>	<u>844</u>	<u>100.0%</u>
5. Approximate number of hours/week in preparation				
Less than 3	3	12.0%	103	12.3%
3-5	15	60.0%	430	51.4%
6-9	6	24.0%	237	28.3%
9-11	1	4.0%	51	6.1%
12 or more	0	0.0%	16	1.9%
	<u>25</u>	<u>100.0%</u>	<u>837</u>	<u>100.0%</u>
6. Grade student expects to receive in course				
A	11	45.8%	278	33.2%
B	11	45.8%	389	46.4%
C	2	8.3%	154	18.4%
D	0	0.0%	14	1.7%
F	0	0.0%	3	0.4%
I	0	0.0%	0	0.0%
	<u>24</u>	<u>100.0%</u>	<u>838</u>	<u>100.0%</u>

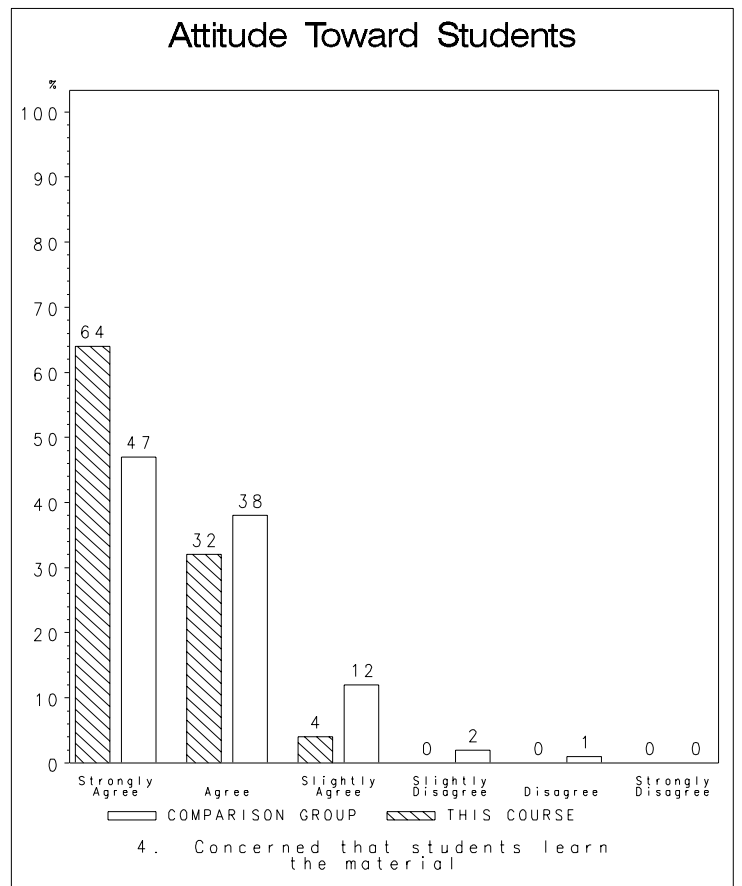
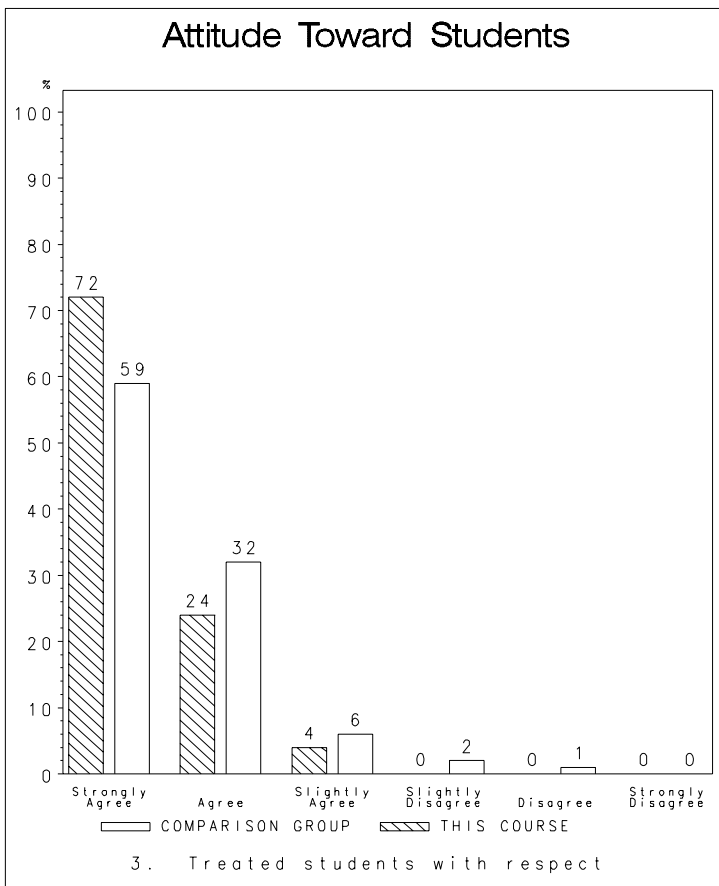
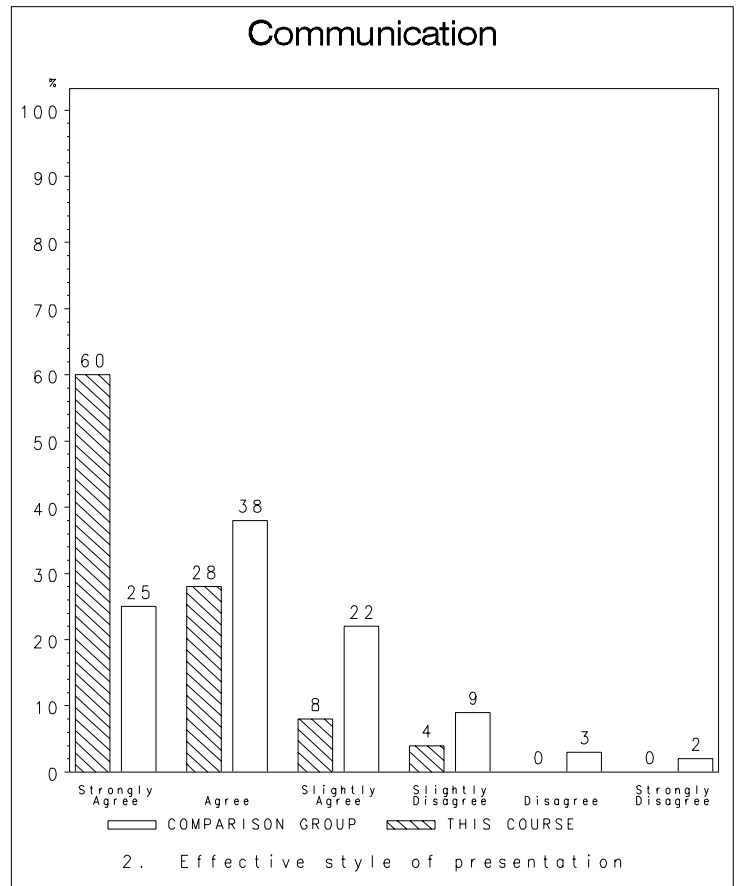
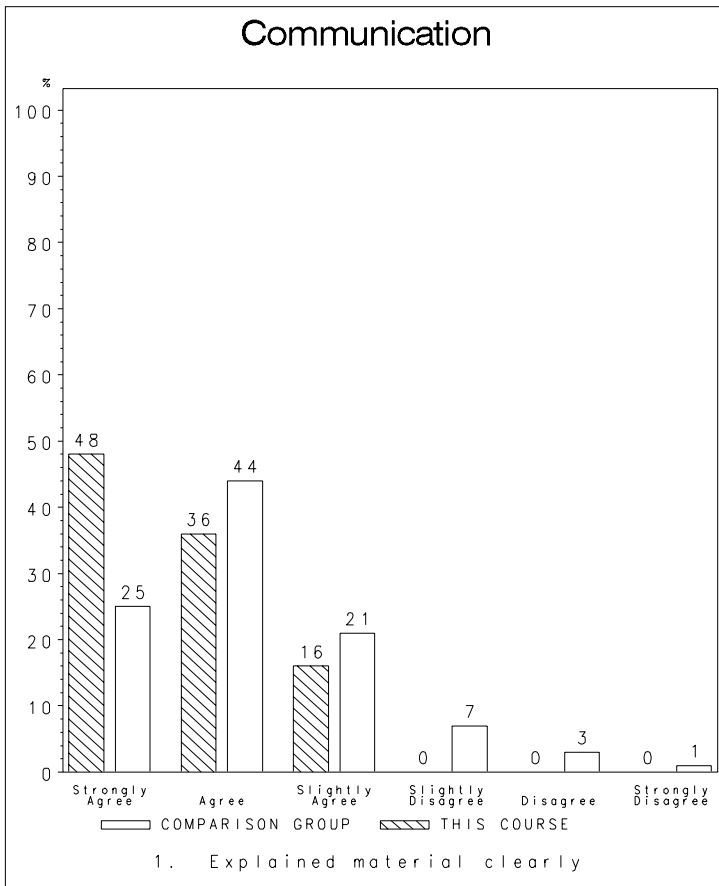
Comparison Group Information

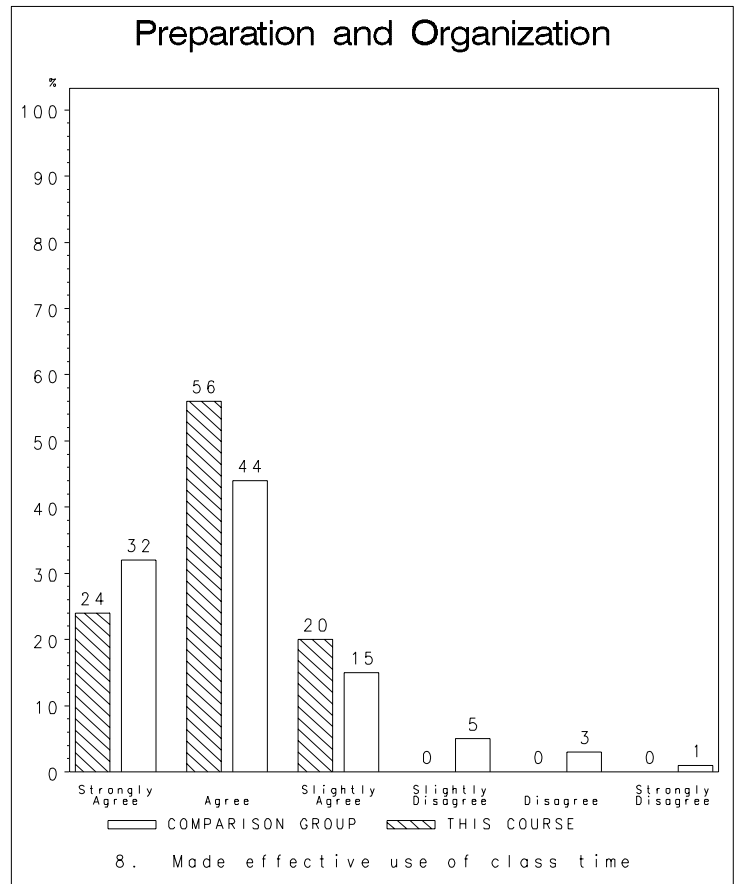
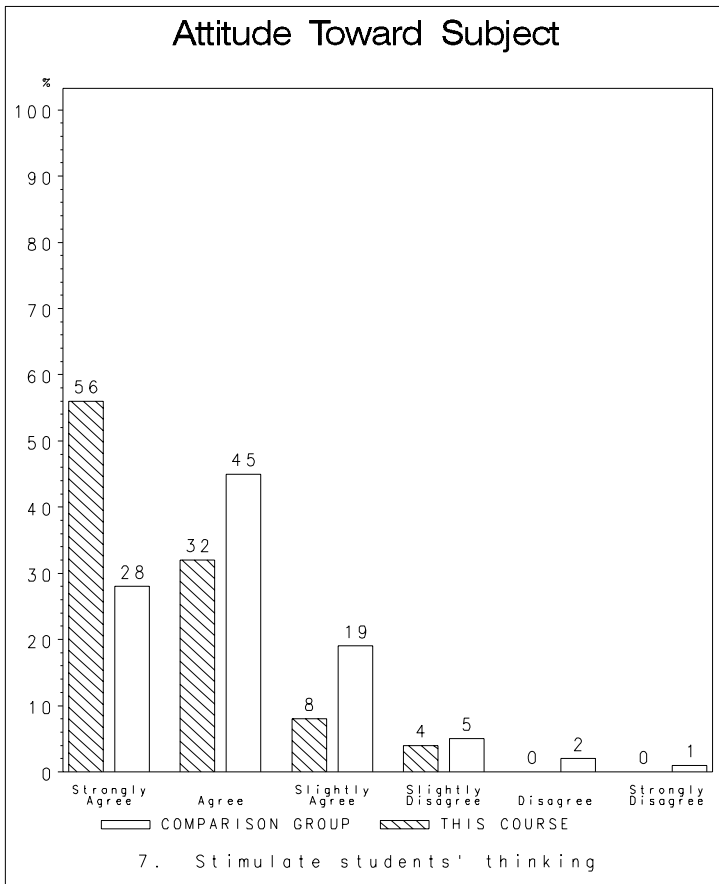
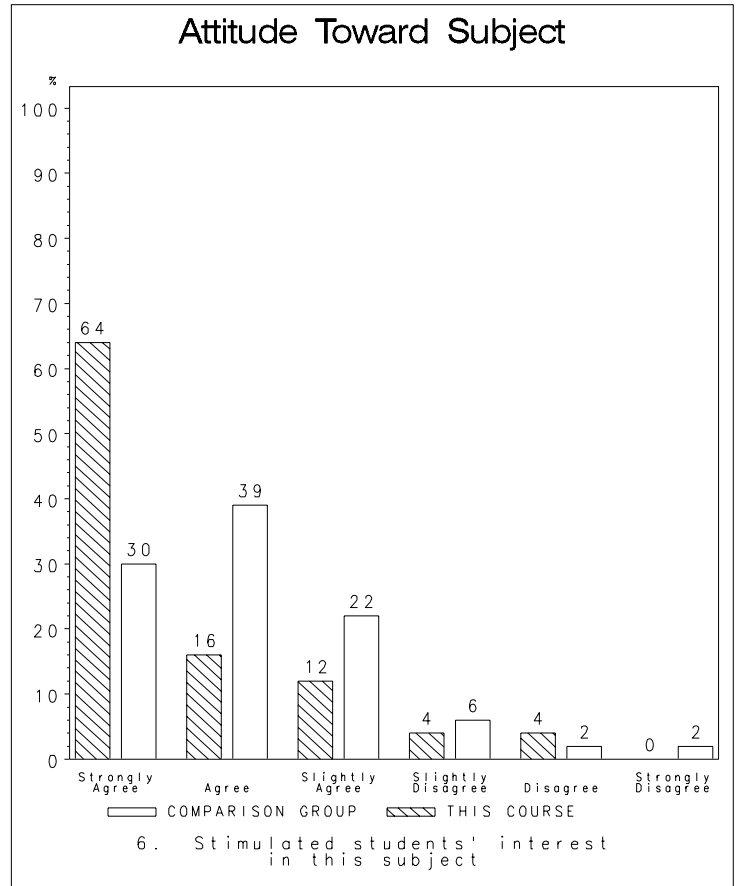
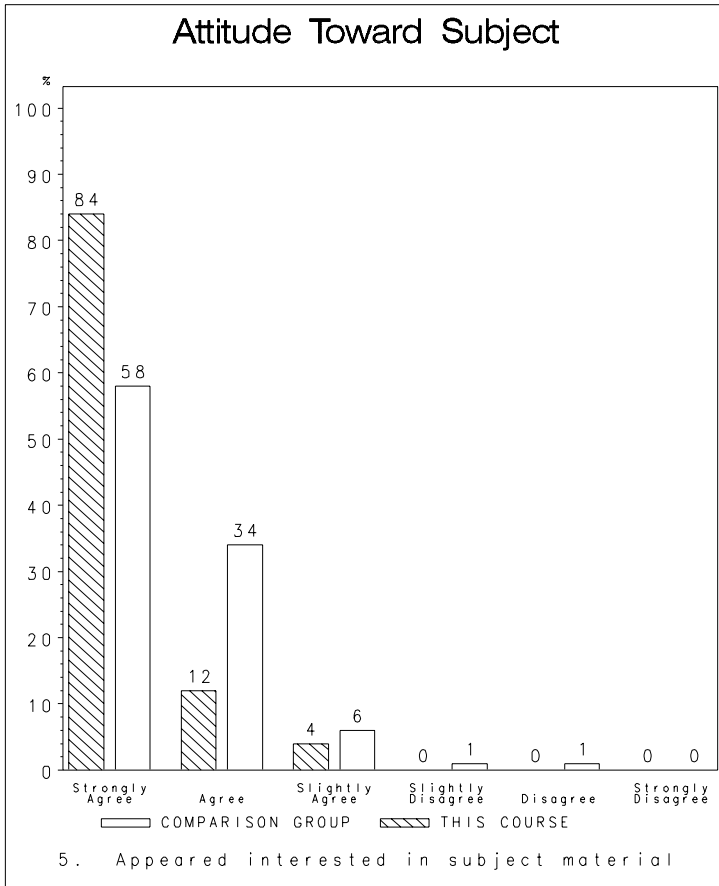
Department	Course	Number of Sections
069	3320	5
069	3321	3
069	3322	5
069	3323	4
069	3333	3
069	3335	8
069	3336	3
069	3337	3
069	3338	3
069	3345	3
069	3414	3

Number of classes included in comparison group: 43

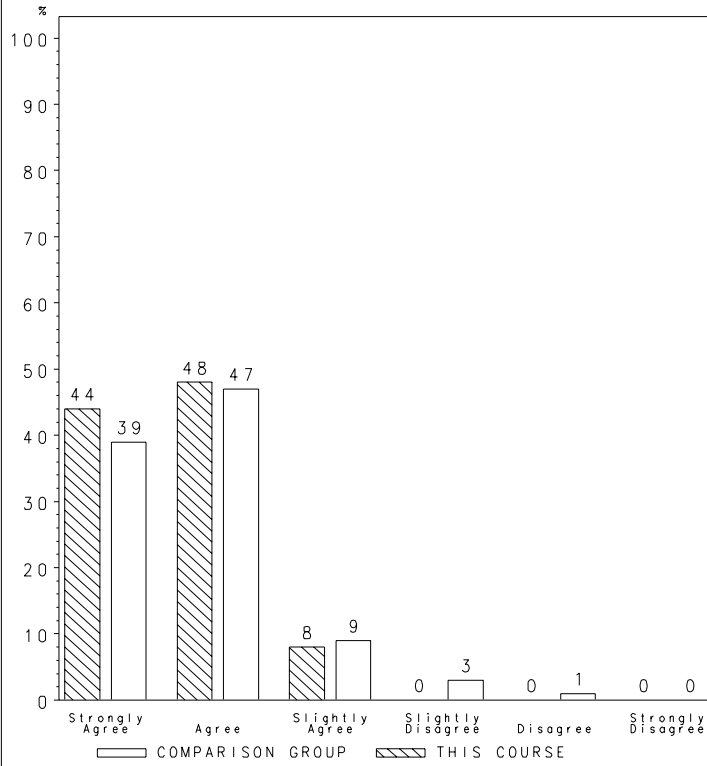
Number of professors in comparison group: 15

This comparison group does not include ANY courses taught by the professor being evaluated.



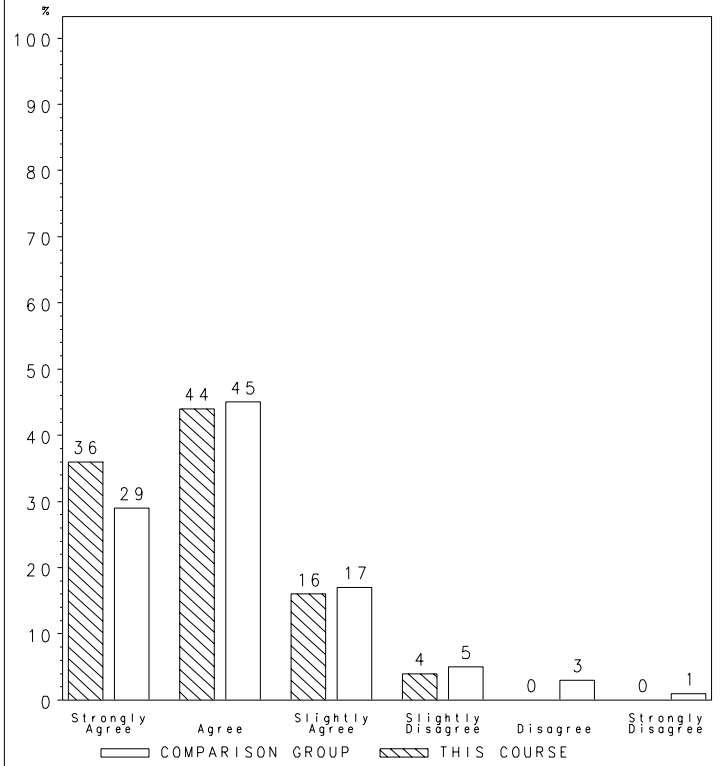


### Preparation & Organization



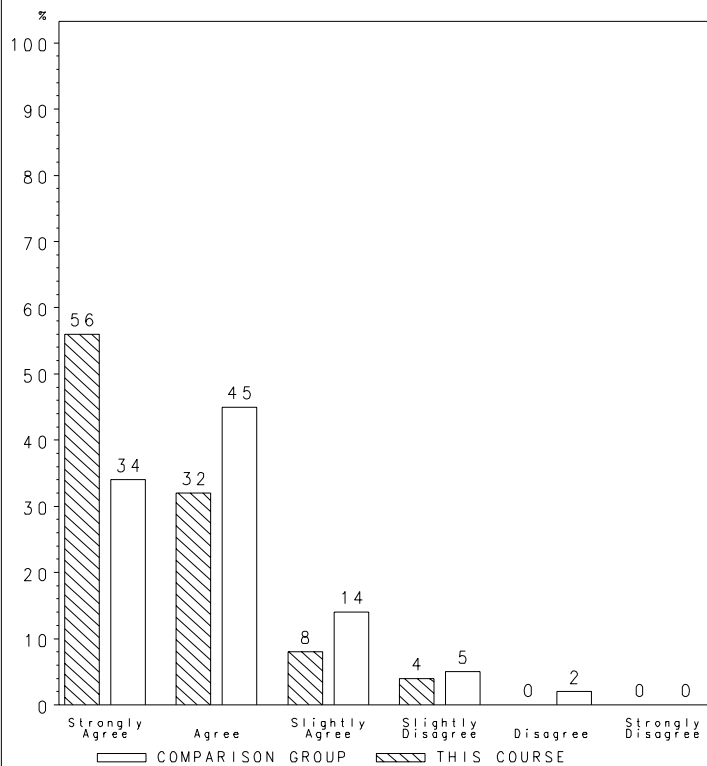
9. Instructor was well-prepared for each class

### Preparation & Organization



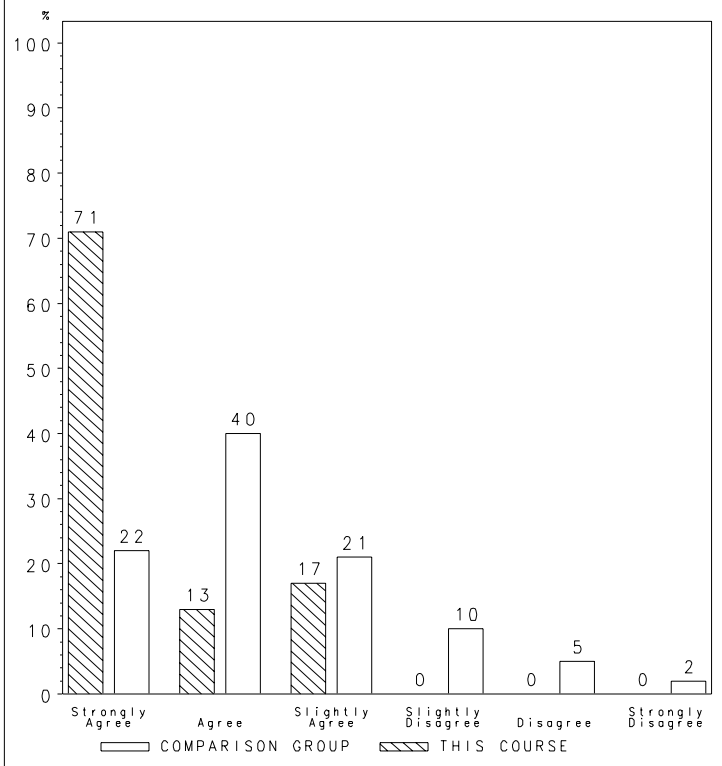
10. Course was well-organized

### Policy & Evaluation



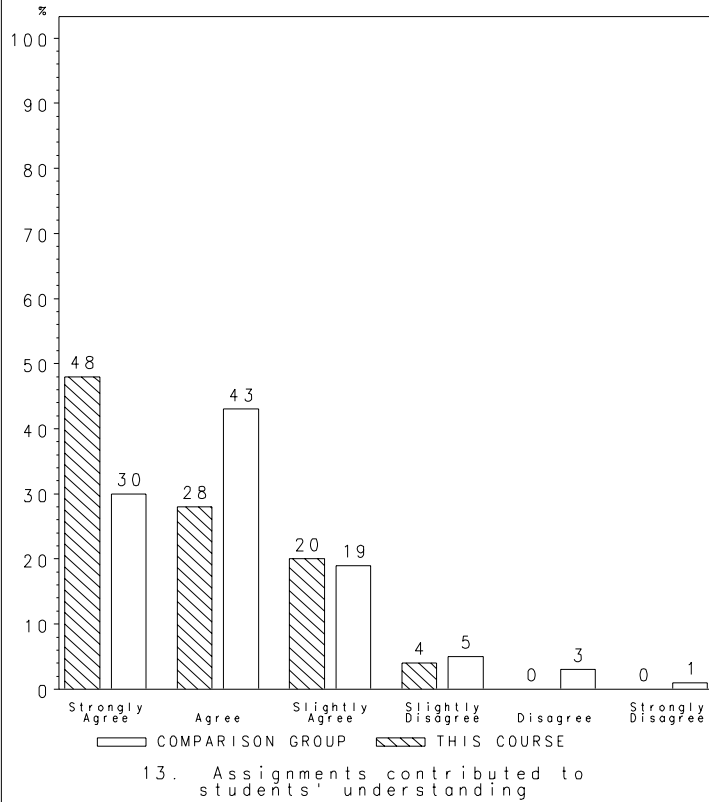
11. Class requirements were clearly explained

### Policy & Evaluation

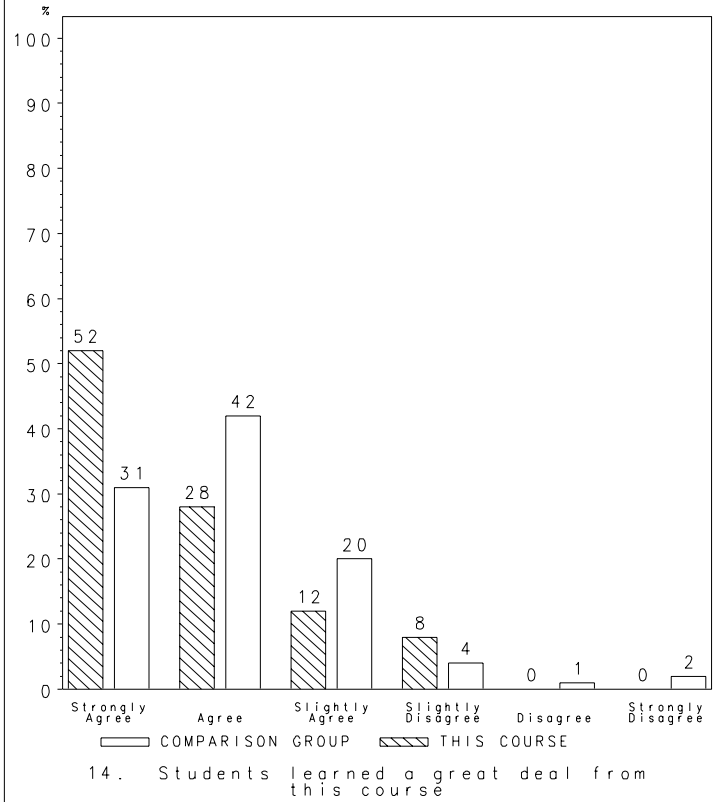


12. Exams were good measure of students' knowledge

### Text & Instructional Material



### Overall



### Overall

