

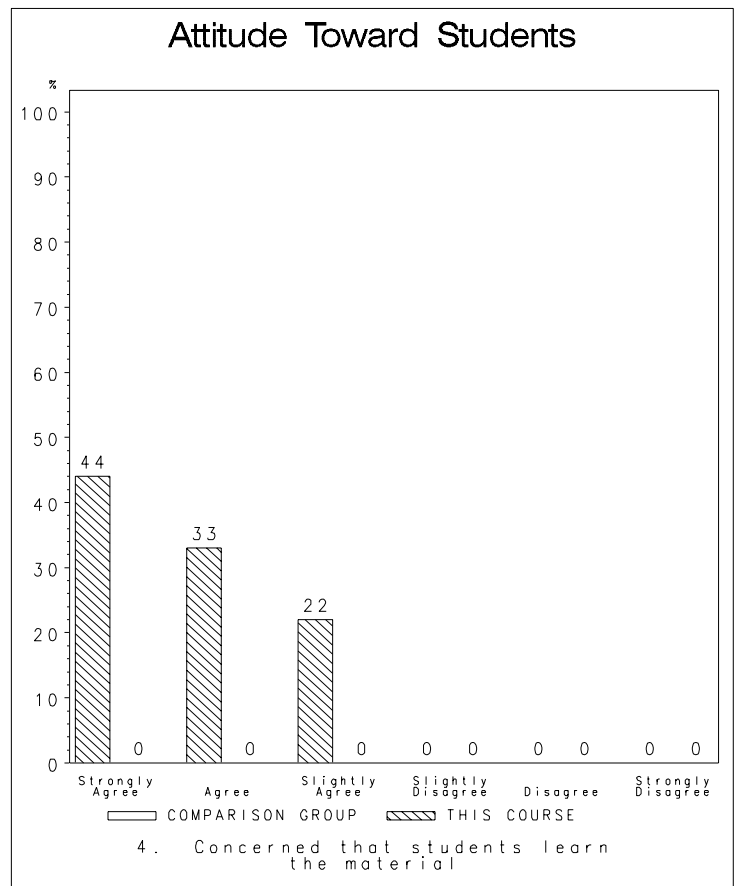
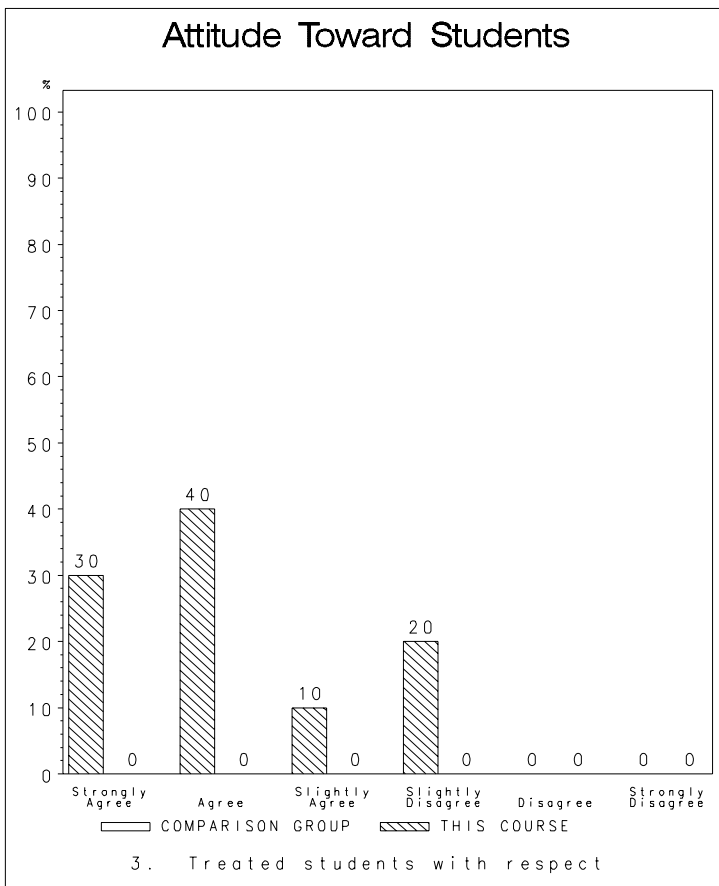
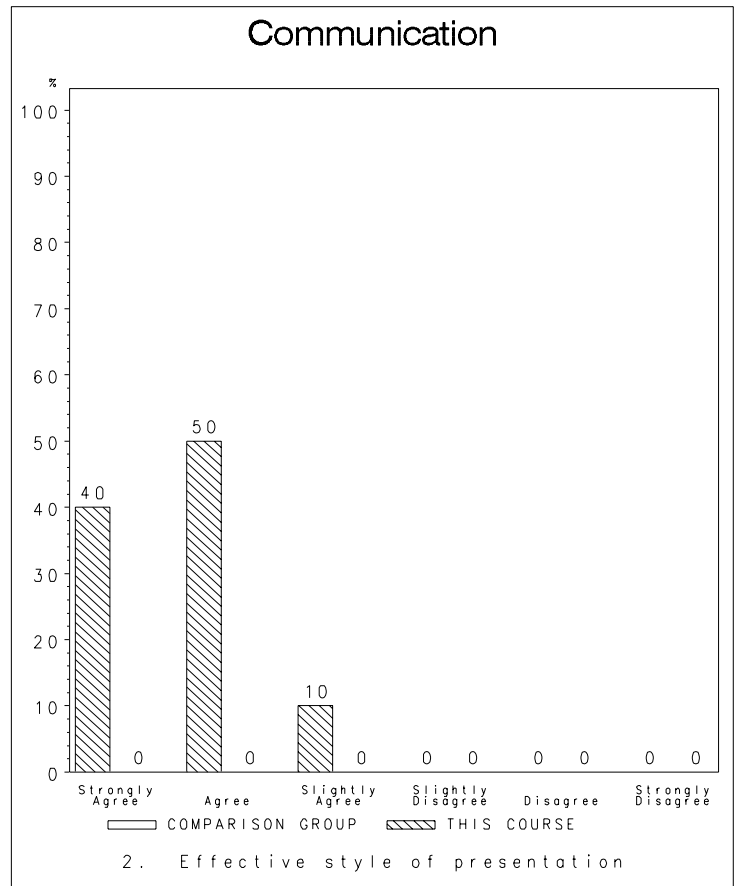
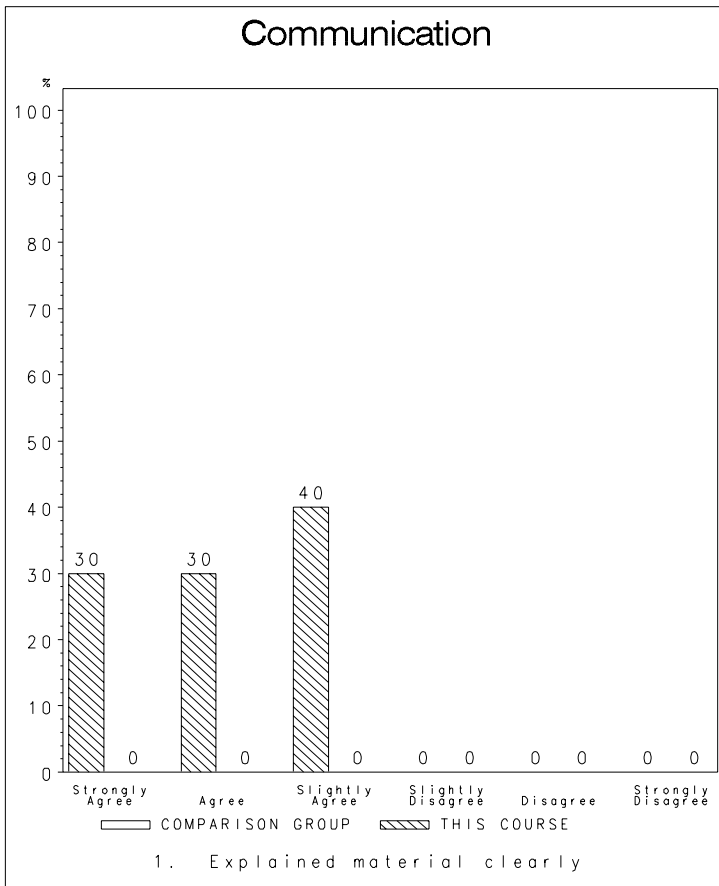
	This Class	Comparison Group		
	#	%	#	%
1. Requirement or elective status				
In students' major field of study	10	0.0%	0	0.0%
University requirement for degree program	0	0.0%	0	0.0%
An elective (whether or not in major)	0	0.0%	0	0.0%
	<u>10</u>	<u>100.0%</u>	<u>0</u>	<u>100.0%</u>
2. Did students' academic background prepare them				
Yes	5	50.0%	0	0.0%
No	5	50.0%	0	0.0%
	<u>10</u>	<u>100.0%</u>	<u>0</u>	<u>100.0%</u>
3. Classification of student				
Freshman	0	0.0%	0	0.0%
Sophomore	0	0.0%	0	0.0%
Junior	0	0.0%	0	0.0%
Senior	0	0.0%	0	0.0%
Graduate student	10	100%	0	0.0%
Other	0	0.0%	0	0.0%
	<u>10</u>	<u>100.0%</u>	<u>0</u>	<u>100.0%</u>
4. Approximate number of absences from this class				
Less than 3	10	100%	0	0.0%
3-5	0	0.0%	0	0.0%
6-9	0	0.0%	0	0.0%
9-11	0	0.0%	0	0.0%
12 or more	0	0.0%	0	0.0%
	<u>10</u>	<u>100.0%</u>	<u>0</u>	<u>100.0%</u>
5. Approximate number of hours/week in preparation				
Less than 3	0	0.0%	0	0.0%
3-5	7	70.0%	0	0.0%
6-9	3	30.0%	0	0.0%
9-11	0	0.0%	0	0.0%
12 or more	0	0.0%	0	0.0%
	<u>10</u>	<u>100.0%</u>	<u>0</u>	<u>100.0%</u>
6. Grade student expects to receive in course				
A	3	30.0%	0	0.0%
B	7	70.0%	0	0.0%
C	0	0.0%	0	0.0%
D	0	0.0%	0	0.0%
F	0	0.0%	0	0.0%
I	0	0.0%	0	0.0%
	<u>10</u>	<u>100.0%</u>	<u>0</u>	<u>100.0%</u>

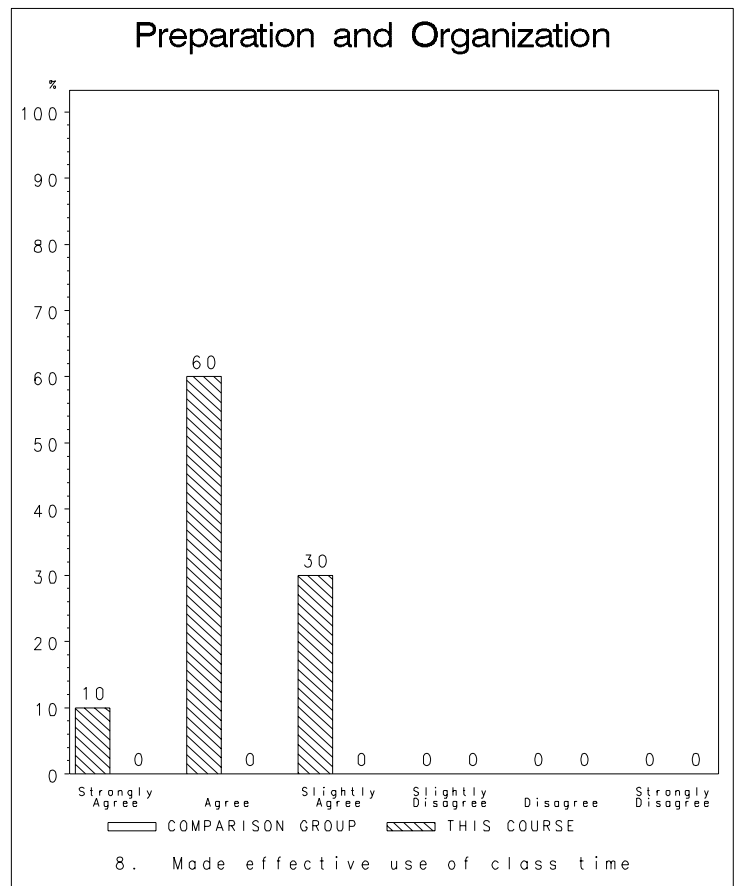
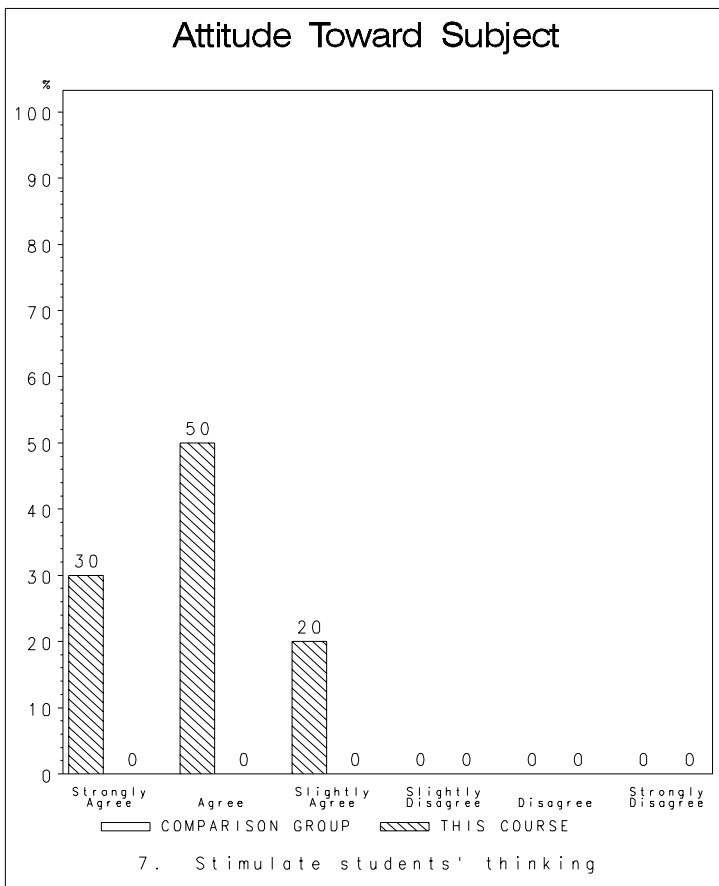
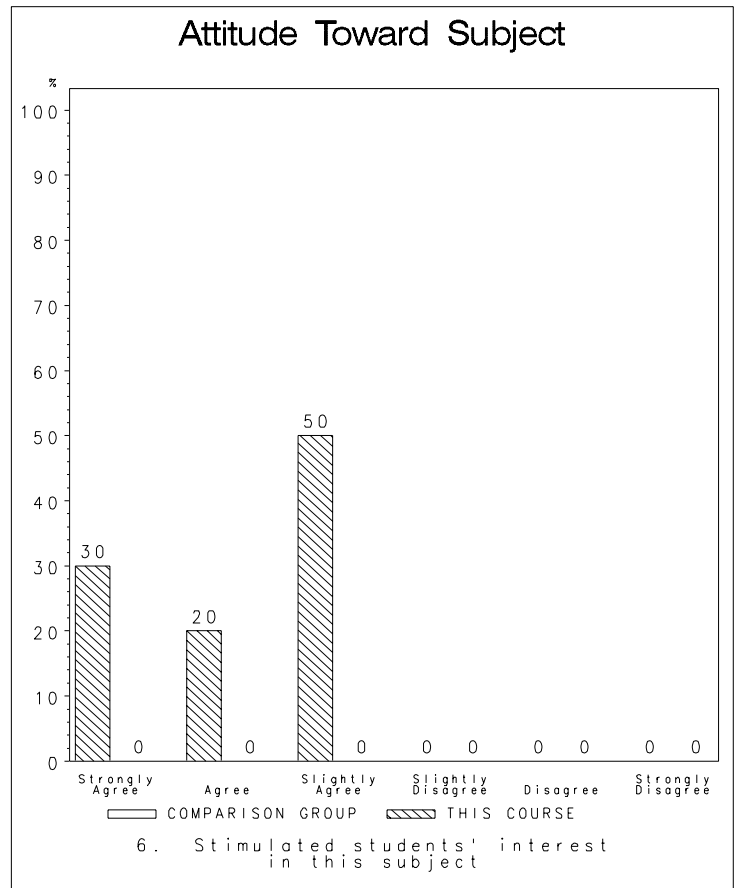
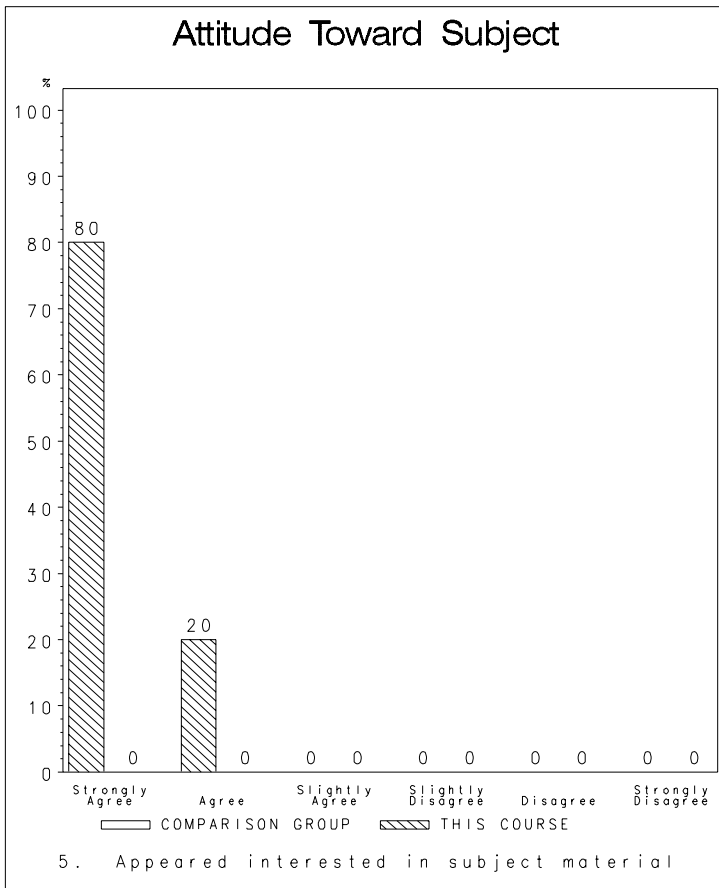
Term	Department	Course	Section	Professor	CID	Page
Fall 2004	&DEPT	5354	01	776944	10456	2 of 6

Comparison Group Information

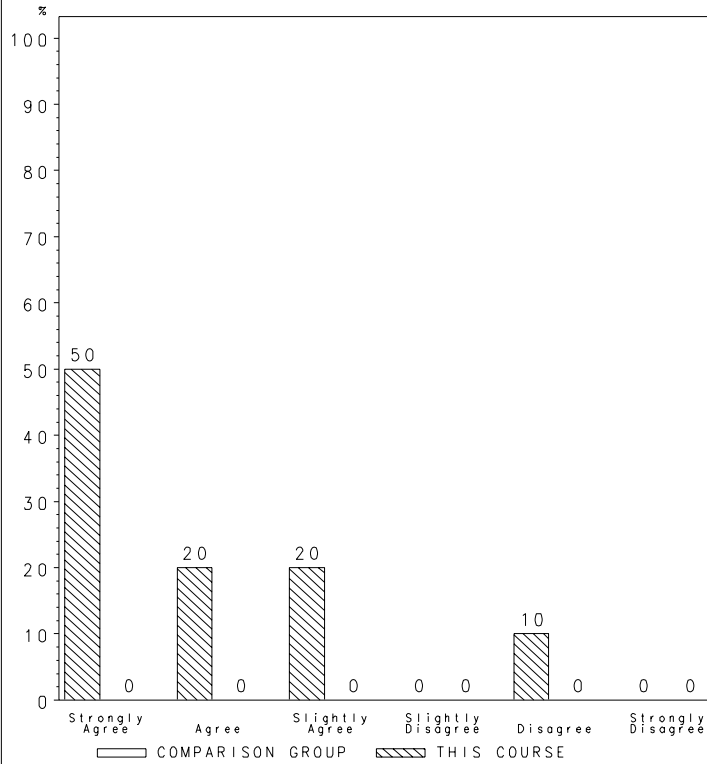
NOTE: There were no courses in the comparison group or there was only one professor in the comparison group.

Comparison group information will not be printed.



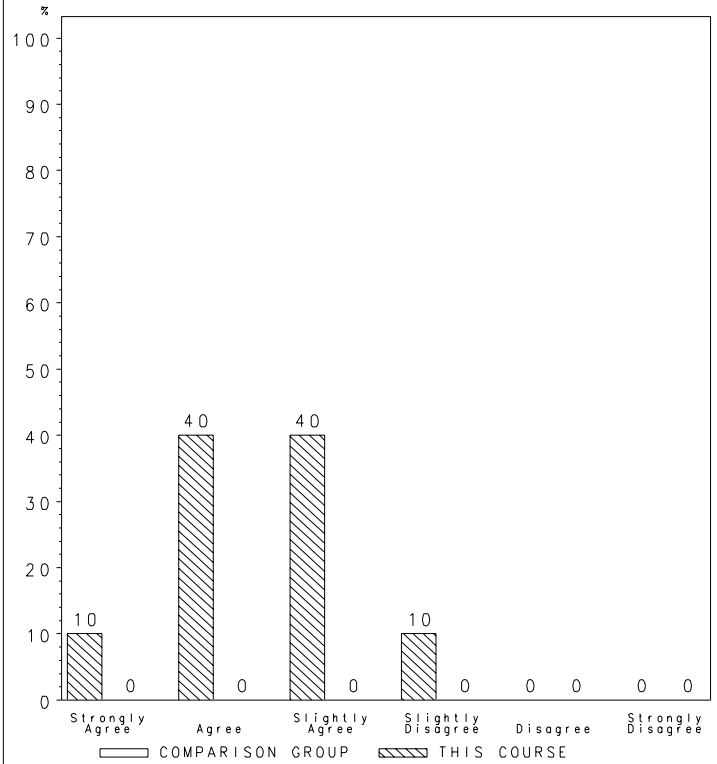


Preparation & Organization



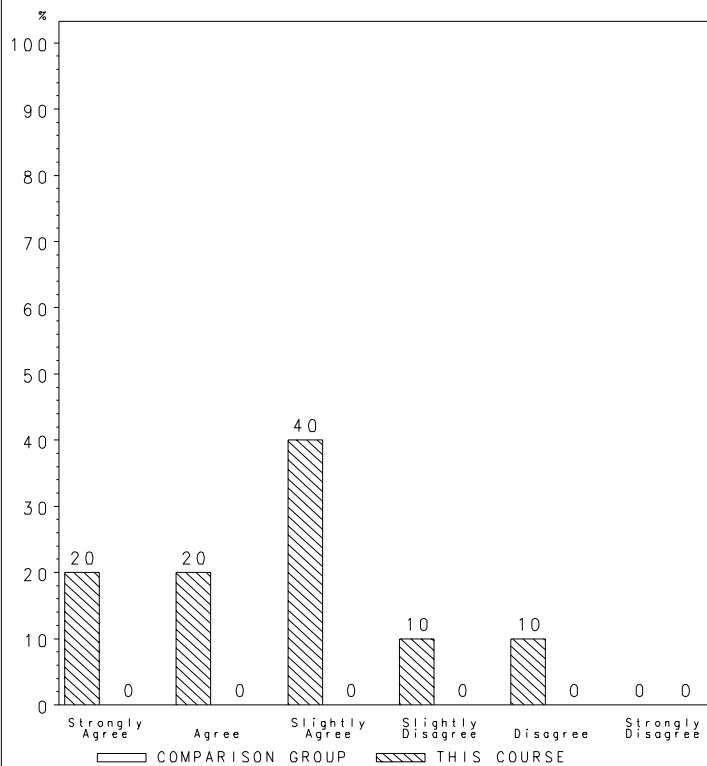
9. Instructor was well-prepared for each class

Preparation & Organization



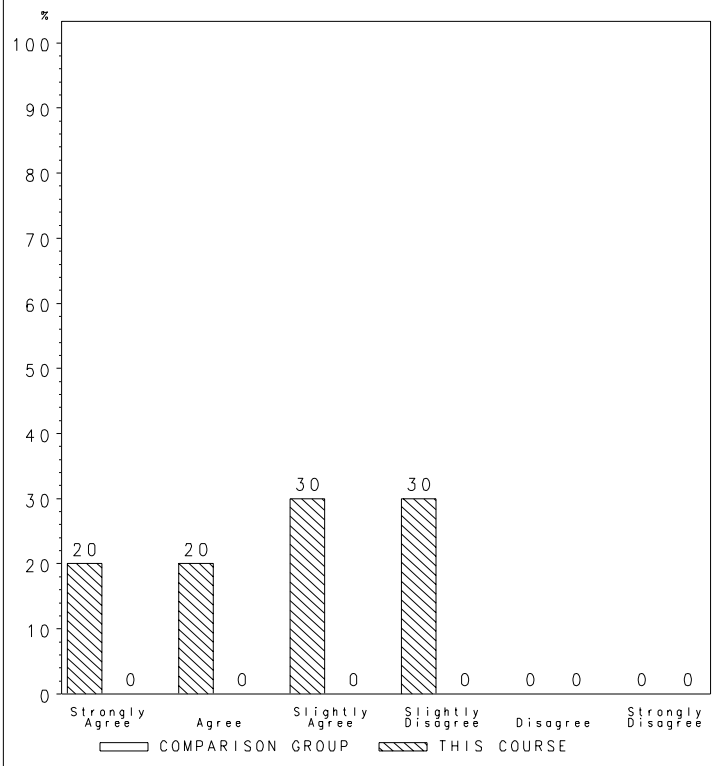
10. Course was well-organized

Policy & Evaluation



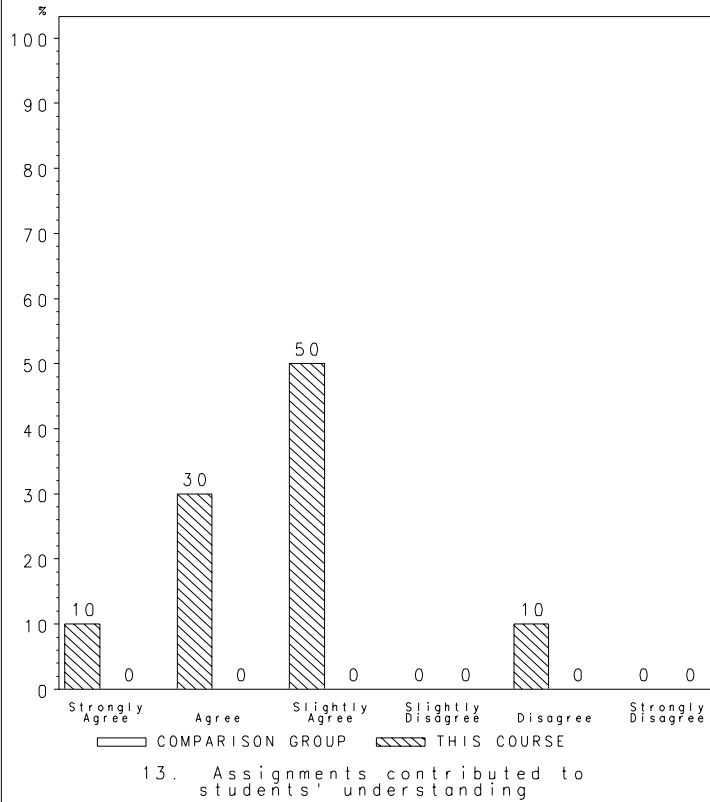
11. Class requirements were clearly explained

Policy & Evaluation

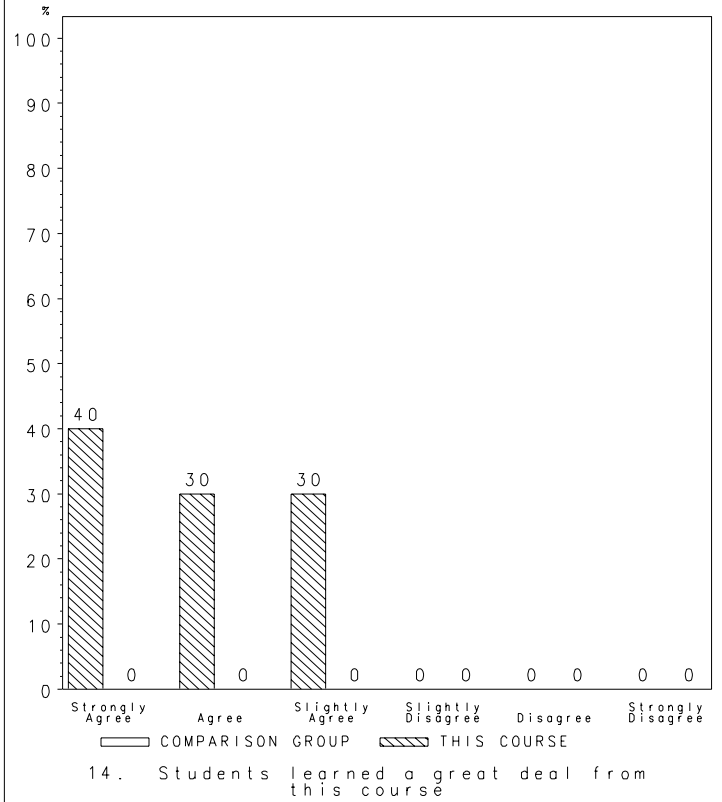


12. Exams were good measure of students' knowledge

Text & Instructional Material



Overall



Overall

